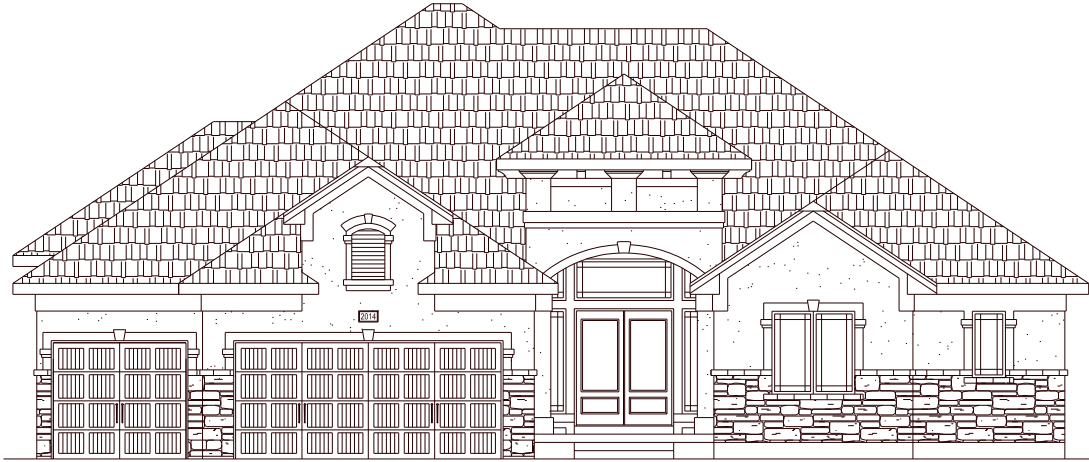




# The Enclave

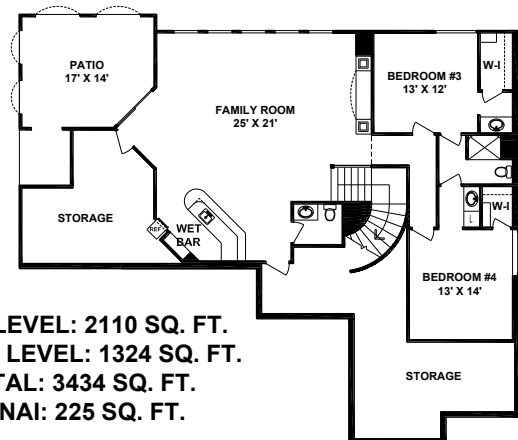
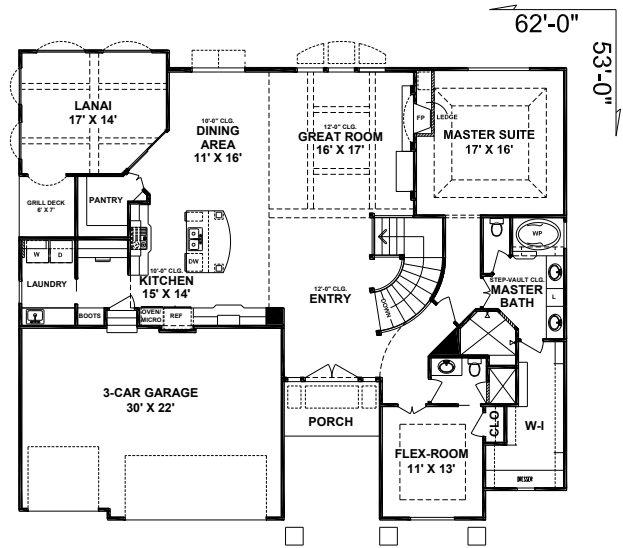
Pfeifer Homes  
INCORPORATED

3,434 SqFt | 4 Bed | 5 Bath | Reverse 1 1/2



Welcome home to the Enclave.

This exciting design welcomes you from the street with its unique front elevation that boasts a large gabled front porch and high ridge lines. Once you enter you are welcomed by the radius stair case that flows into the open floor plan. The spacious kitchen flows onto the lanai which includes a separate grill deck to complete your outdoor living experience. This unique floor plan can be easily modified to fit your needs, budget and lifestyle.



MAIN LEVEL: 2110 SQ. FT.  
LOWER LEVEL: 1324 SQ. FT.  
TOTAL: 3434 SQ. FT.  
LANAI: 225 SQ. FT.



[www.PfeiferHomes.com](http://www.PfeiferHomes.com)

Justin@pfeiferhomes.com and Troy@pfeiferhomes.com | 816-524-5245 office