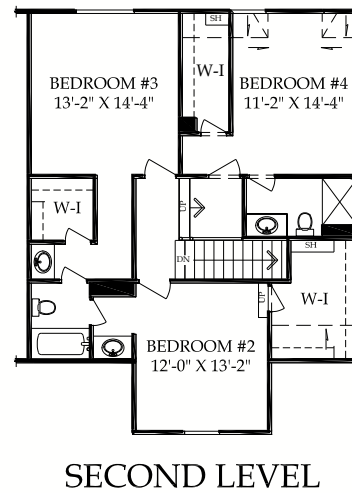
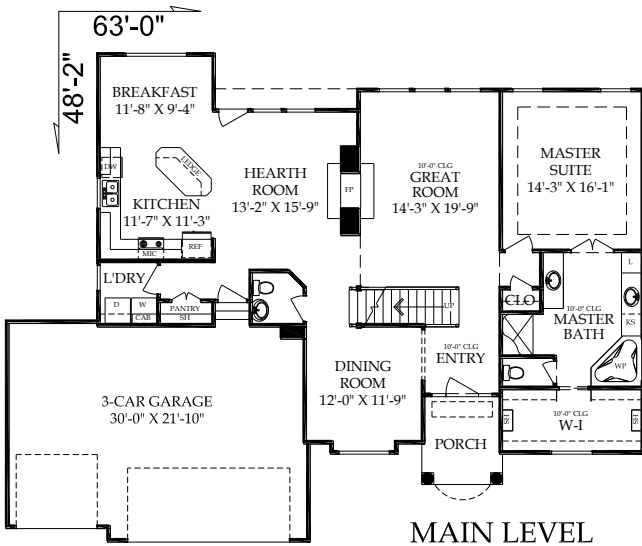
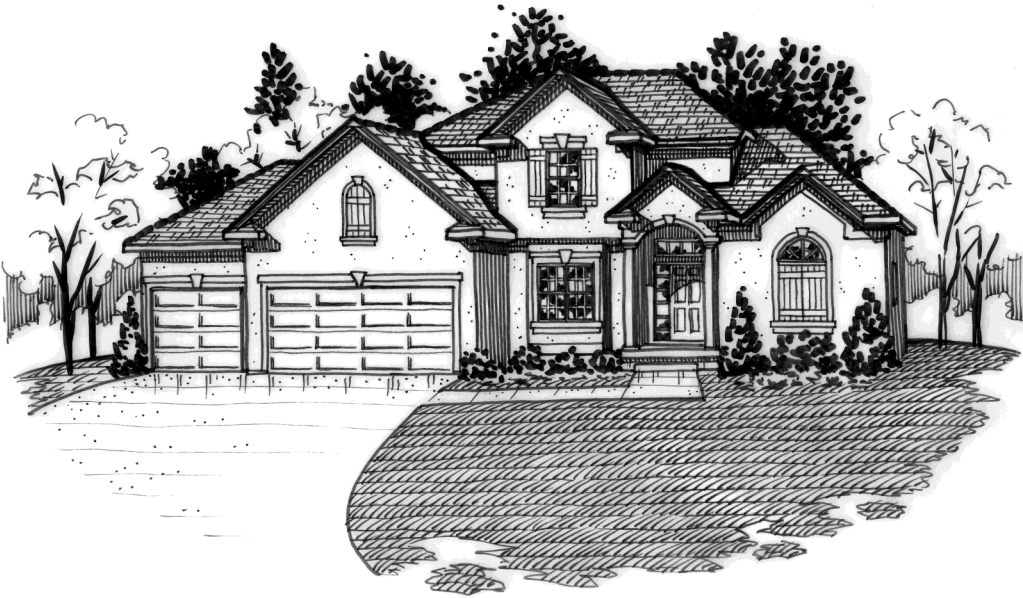




The Ashland

Pfeifer Homes
INCORPORATED

2,618 SqFt | 4 Bed | 3.5 Bath | 1 1/2 Story



MAIN LEVEL: 1708 SQ. FT.
SECOND LEVEL: 910 SQ. FT.
TOTAL: 2618 SQ. FT.

Copyright ©
Viewpoint Residential Design, LLC